



P.O. Box 9882
Chesapeake, VA 23321

RETURN SERVICE REQUESTED

LTI Provides...
Curriculum, Conferences, Certification, Consulting, and Centers

Non-Profit
Organization
US Postage
PAID
VA Beach, VA
Permit No. 163

In this issue

- LTI Update
- Leading With Teams, 2nd Ed.
- Coming Soon!
- Welcome to Debbie Houde
- Leadership Lessons



Vol.12 No.1

May/June 2005

Leadership Training International RESULTS

LTI Update

Key Upcoming Events:

May 23-27

Continental Theological Seminary
Brussels, Belgium
The Leader's Calling and *The Leader's Potential*

June 3-4

Certified Training Seminar
Calvary Lighthouse
Lakewood, NJ

June 11

Ambassadors Complete Training
Summit (ACTS)
Cornerstone Assembly of God
Hampton, VA
The Leader's Potential, Second Half

June 20-23

Harvest Network International
Cleveland, OH
National Assembly

August 17-18

Certified Training Seminar
Calvary Evangelical Baptist
Portsmouth, VA

Leading With Teams Second Edition Release

LTI is pleased to announce the 2nd edition release of the *Leading With Teams* module. The topic of team ministry is one of the hottest issues in ministry today, and we felt it was important to upgrade this module to make it current and packed with tools for leaders desiring to work in a team approach.

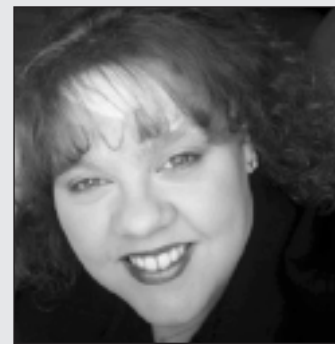
Why did we create a 2nd edition? The FEL Series has grown in scope since the project began five years ago. The concept of including the extensive Appendices of supportive material was not part of the first few modules published. Once we committed to include the new Appendices, we decided to expand the module content as well.

LTI would especially like to thank Melissa Falk for her role as a curriculum team intern on this project. Melissa is a 2005 graduate of Regent University, where she is also employed as the Program Manager of the Doctor of Ministry Program. We were blessed to have such a high quality person working with our regular curriculum team.

The *Leading With Teams* module is available for purchase now!



Leading With Teams



Melissa Falk, LTI Intern
Spring 2005

our mission:
LTI provides training & resources to multiply ministry leaders to fulfill the Great Commission



LTI is a member in good standing of the Evangelical Council for Financial Accountability.

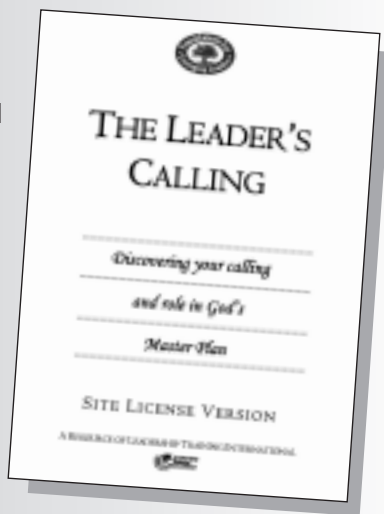
Coming Very Soon! The FEL Site License Version

We are excited to announce the soon-to-be-released FEL Site License Version, which will be used overseas and in prisons.

The Site License Version is the same content as the FEL regular version, but the Instructor Guide and Learner Guide are combined into one book per module for ease of printing overseas.

The Site License Version will be sold on CD and the Site License holder will pay LTI for the opportunity to print and distribute the material in larger volumes.

You can purchase the Site License Version starting this summer! Contact us right away if you are interested at (757) 673-6581!



The Leader's Calling, Site License Version

Welcome Aboard to Debbie Houde

LTI welcomes Debbie Houde to the staff and management team. Debbie is now our Office Manager, overseeing the office, staff, and administration, as well as managing the Customer Service activity.



Debbie Houde,
LTI Office Manager

Debbie has an extensive background in restaurant and office management as well as customer service and public relations. She has a deep heart for prayer and servant leadership. Debbie and her husband Tim, who owns Southern Landscaping, live in Suffolk, Va.

Leadership Lessons



by Kevin Hinman, President

Resolving Team Conflict

Taken from Session Six of *Leading With Teams*

To effectively resolve conflict, we must avoid the common unhealthy responses:

- 1. Forcing a Solution Hastily** (Pr 19:2).
We dislike conflict so much, we try to stop it at all costs. If we do not take time to find the root cause, it will reappear more intensely. Unity is not the absence of conflict, it is the presence of agreement.
- 2. Reacting Defensively** (Lk 6:28-29).
Harsh reactions quickly polarize the team to choose a side. The conflict escalates, making it harder to resolve. The issues become meaningless in the new battle.
- 3. Mistrusting Attitude** (Php 2:3).
Avoid viewing the other person as full of bad motives or intentionally trying to hurt you or do something bad. Remember their good qualities and moments you saw them as Godly in character.
- 4. Assigning Blame** (Jas 1:19).
Do not make snap judgments about who is at fault. Wait for the facts and the full explanation of events.
- 5. Gossiping or Talking Too Much** (Jas 3:6).
Do not discuss the issues outside the team or people who are directly affected. Do not involve people who do not need to be. Speak graciously about those involved.
- 6. Acting Like a Dictator** (Mt 20:25-26).
A common but very poor approach is for the leader to blame all conflict on disloyalty and thus step in to squelch it with their positional authority. The issues will remain and fester, and the people grow bitter.

Board of Directors

Rev. Kevin Hinman, Chairman, LTI CoFounder
President, LTI

Rev. Ron Johnson, Vice Chairman
Senior Pastor, Bethel Temple AG

Dr. Diane Wiater, Secretary
Asst. Professor, Regent Business School

Carol Hinman, Treasurer, LTI CoFounder
Operations Manager, LTI

Dr. Tony Cribb
Senior Pastor, Restoration Church

Mickey Salvant
Owner, Shipper's Service Company

Council of Reference

Randy Bozarth, Vice President, Christ for the Nations, Inc.

Dr. Jack W. Hayford, President, The King's Seminary

Michael Little, President
The Christian Broadcasting Network, Inc.

Dr. John Maxwell, Founder, The INJOY Group

Floyd McClung, Pastor, Metro Christian Church

Dr. Luis Palau, Founder & President
Luis Palau Evangelistic Association

Dr. David Shibley, Founder & President, Global Advance

Dr. J. Rodman Williams, Theologian and Author



Write to:

LTI, P.O. Box 9882

Chesapeake, VA 23321

ph: (757) 673-6581 fax: (757) 673-6584
info@lti-va.org www.lti-va.org

RESULTS is a publication of
Leadership Training International

Executive Editor Kevin Hinman
Managing Editor Nae Productions
Printing & Finishing Jones Printing